



WEST SENECA CENTRAL SCHOOLS

CAPITAL IMPROVEMENT PROJECT UPDATE

AGENDA



- CAPITAL OUTLAY PROJECT PROGRESS UPDATE
- SMART SCHOOLS BOND ACT PROJECT PROGRESS UPDATE
- CAPITAL IMPROVEMENT PROJECT PROGRESS UPDATE
 - CAPITAL IMPROVEMENT PROJECT PRE-REFERENDUM PROCESS
 - DISTRICT GOALS
 - PROPOSED SCOPE
 - BUDGET
- SCHEDULE
- QUESTIONS + ANSWERS

CAPITAL OUTLAY PROJECTS



- 2017-18 Project has been completed.
- 2018-19 Project was passed in May Budget Vote.
- 18-19 Project Construction Documents and field verification have been started.

Capital Outlay Project 2017-2018

East Middle School

- Pool Piping Replacement

Capital Outlay Project 2018-2019

West Senior High School

- Window Caulk Replacement



SMART SCHOOLS BOND ACT PROJECT

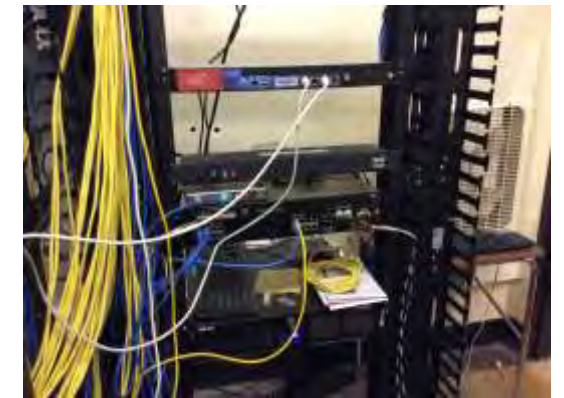


■ PROGRESS

- Final Smart Schools Investment Plan (SSIP) approved by BOE, and submitted to SSBA Review Board.

■ SCOPE PRIORITIES:

- Upgrade Wi-Fi
- Upgrade existing wiring
- Install additional access points
- Replace/upgrade outdated data cabinets
- Replace/upgrade phones
- Upgrade data closet HVAC systems



CAPITAL IMPROVEMENT PROJECT DEVELOPMENT



December 2015

NYSED Building Condition Survey Completed

District review of budget availability

District determines scope & budget

SEQRA

Public Information Meetings



2015

2016

2017

2018

2019

2016

- District reviewed Building Condition Survey data
- Architects met with committee/staff to understand priorities
- Committees prioritized items to start a Long Term Plan

Meet with:

- Building Staff
- Parent/Teacher Groups
- Boosters/Community

Board Resolution of Capital Project

Public Vote
Dec. 4th



CAPITAL IMPROVEMENT PROJECT MEETINGS



Past Meetings with Public & User Groups:

- Monthly Meetings with the Owner/Architect group
- 12/6/17 – Meeting w/ Building Principals
- 1/10/18 – Meeting w/ District Parent Council
- 1/25/18 – Meeting w/ Athletics & Music Groups
- 2/12/18 – BOE Update Presentation
- 7/11/18 – District Meeting w/Building Principals
- 8/06/18 – BOE Update Presentation
- 9/10/18 – Band Boosters Update Presentation
- 10/01/18 – Athletic Boosters Update Presentation
- 10/17/18 – Presentation at Senior Citizens Center

Future Public Meetings:

- 10/22/18 Public Meeting
 - Clinton Elementary @ 6:30pm
- 11/13/18 Public Meeting
 - East Senior High School @ 6:30pm
- 11/28/18 Public Meeting
 - Allendale Elementary @ 6:30pm

Public Vote:

- **December 4th, 2018**
- 7:00am – 9:00pm
- East Senior High School

COMMENTS FROM USER GROUPS



- **Security** – Secure Entries at each building
- **Building Shell** improvements to achieve Warm, Safe, and Dry
 - Roofs, Masonry, Windows, Doors
- **Music** – additional storage & rehearsal space
- **Upgrade Educational Space** to 21st Century Classrooms
 - Science Lecture & Labs
- **Athletic Fields** – Tracks are becoming a safety issue
- **Site Pavement** – Sidewalks and parking lots in need of repair



CAPITAL PROJECT GOALS



Health/Safety/Welfare • Security • Accessibility Improvements

+

Facilities Infrastructure Improvements

+

Building Utilities

+

Educational Space & Program Improvements

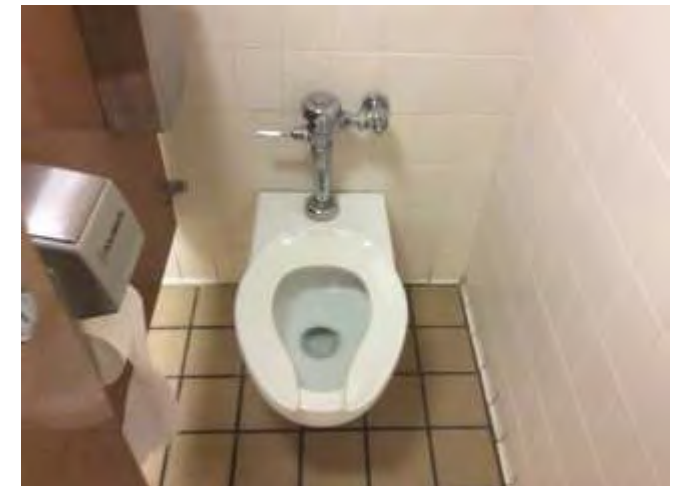
+

Site Improvements

HEALTH/ SAFETY/WELFARE – SECURITY – ACCESSIBILITY IMPROVEMENTS



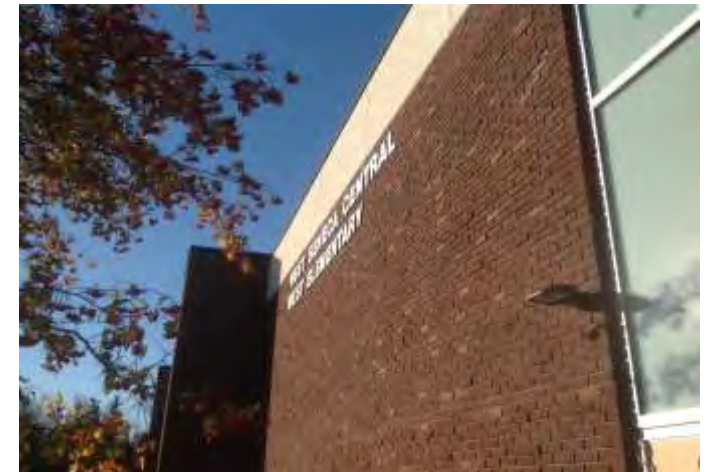
- Secure Entrances
- Intruder Function Interior Door Hardware at classrooms
- Renovate existing toilet rooms to meet ADA requirements
- ADA Lifts/ Accessibility
- Interior stair repair



FACILITIES INFRASTRUCTURE IMPROVEMENTS



- Roofs & Skylights
- Masonry & Foundation Restoration
- Exterior Doors & Windows



BUILDING UTILITY UPGRADES



- Clock & PA Systems Upgrades
- Exterior Lighting Upgrades
- Drinking Fountains / Water Bottle Fillers
- Heating & Ventilation
- Plumbing Fixtures & Equipment
- Lighting & Power
- IT Upgrades



EDUCATIONAL SPACE & PROGRAM IMPROVEMENTS

– SCIENCE & ART



- Upgrade High School **SCIENCE** Rooms to 21st Century Classrooms



- Renovate / Improve High School **ART** Classrooms



EDUCATIONAL SPACE & PROGRAM IMPROVEMENTS – MUSIC



- Renovate / improve **MUSIC** spaces
- Provide additional **INSTRUMENT STORAGE**



EDUCATIONAL SPACE & PROGRAM IMPROVEMENTS

– ATHLETICS



- Replace folding partitions with **Roll Down Curtain**
- Replace/Refinish **Gym Floors**
- Replace **Gym Wall Pads**
- Replace/Remove **Gym Bleachers**



EDUCATIONAL SPACE & PROGRAM IMPROVEMENTS

– SITE ATHLETICS



- New **TRACK**
- New **TURF ATHLETIC & PERFORMANCE FIELD**
- New **BLEACHERS & PRESSBOX**
- New **TENNIS COURTS** (West Senior only)
- New **CONCESSIONS STAND** (West Senior only)



SITE INFRASTRUCTURE IMPROVEMENTS



- Replace/ repair portions of concrete **Sidewalks**
- Replace/ repair portions of **Asphalt Pavement** parking lots
- Replace catch basins
- Repair/ replace exterior stairs & ramps



EDUCATIONAL SPACE & PROGRAM IMPROVEMENTS – EAST SENIOR HIGH SCHOOL



HEALTH/ SAFETY/ WELFARE, SECURITY & ACCESSIBILITY:

- Secure entry vestibule
- Relocate main offices
- Update interior door hardware

FACILITIES INFRASTRUCTURE:

- New Roof/Restoration
- Masonry Restoration
- New Exterior Doors
- New Pool Windows

BUILDING UTILITIES:

- Cabling, CER, clock systems & PA
- Air handling and ventilation upgrades
- New drinking fountains
- New exterior LED light fixtures

EDUCATIONAL SPACE & PROGRAM IMPROVEMENTS:

- Gymnasium – replace portion of damaged floor
- Music – Renovate music classrooms
- Science – Renovation of existing science classrooms on 2nd & 3rd floors



EDUCATIONAL SPACE & PROGRAM IMPROVEMENTS – EAST SENIOR HIGH SCHOOL



Create Secure Entry



Renovate Science Classrooms



Renovate Music Classrooms



New Roof/
Restoration

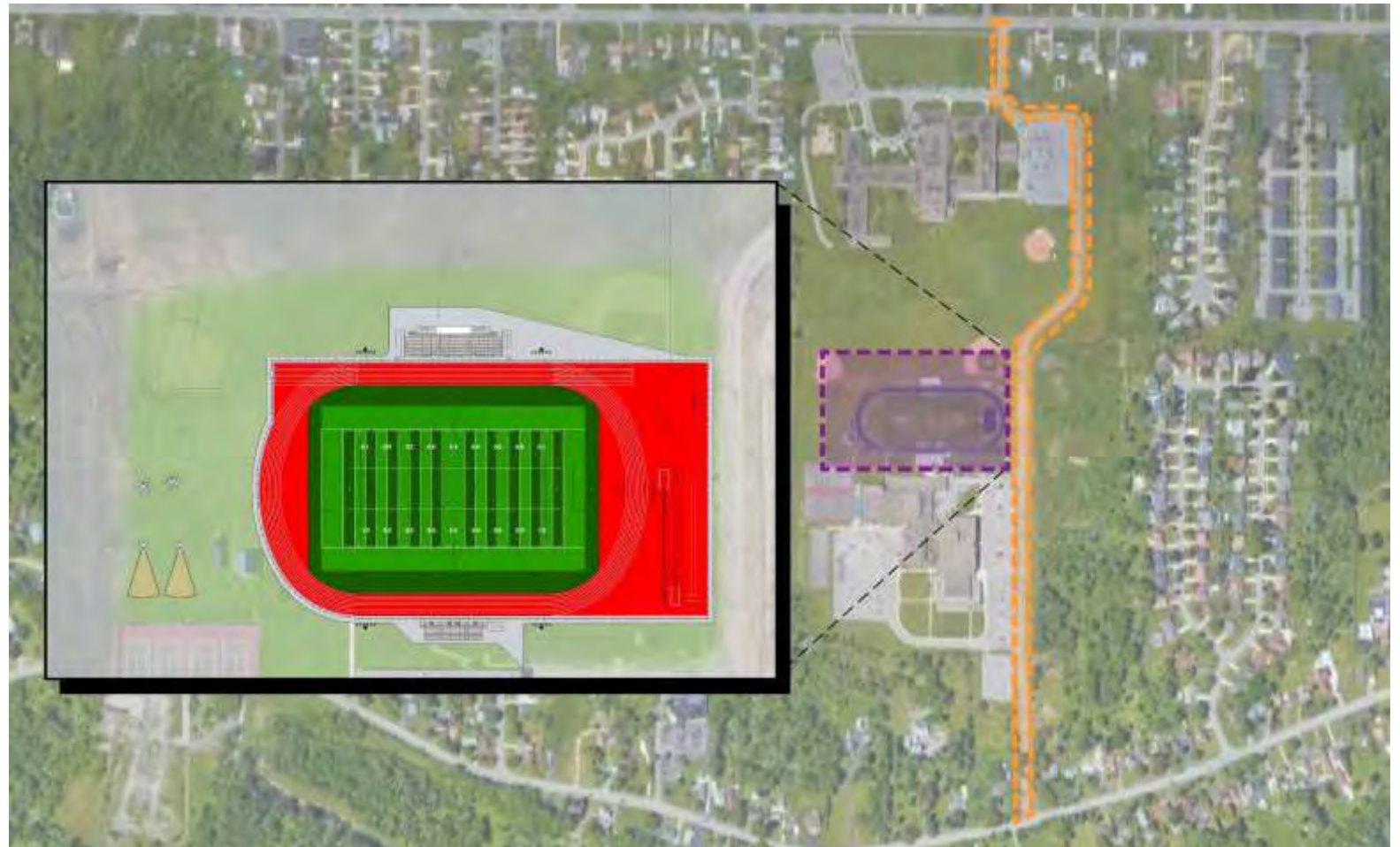


EDUCATIONAL SPACE & PROGRAM IMPROVEMENTS – EAST SENIOR HIGH SCHOOL SITE



EDUCATIONAL SPACE & PROGRAM IMPROVEMENTS - SITE (ATHLETICS):

- Track and Field
 - turf field w/ drainage
 - track & fencing
 - long jump
 - triple jump
 - pole vault
 - steeplechase
 - discus
 - shotput
 - scoreboards
 - storm water management
 - home bleachers
- Pedestrian circulation around new track/field
- Lighting around track/ field
- Existing home bleachers to serve as visitor bleachers



SITE IMPROVEMENTS:

- Replace damaged sidewalks & curbs
- Replace asphalt access drive

EDUCATIONAL SPACE & PROGRAM IMPROVEMENTS – WEST SENIOR HIGH SCHOOL



HEALTH/ SAFETY/WELFARE, SECURITY & ACCESSIBILITY:

- Renovate entry to create secure entrance
- Provide accessibility to stage
- Update interior door hardware

FACILITIES INFRASTRUCTURE:

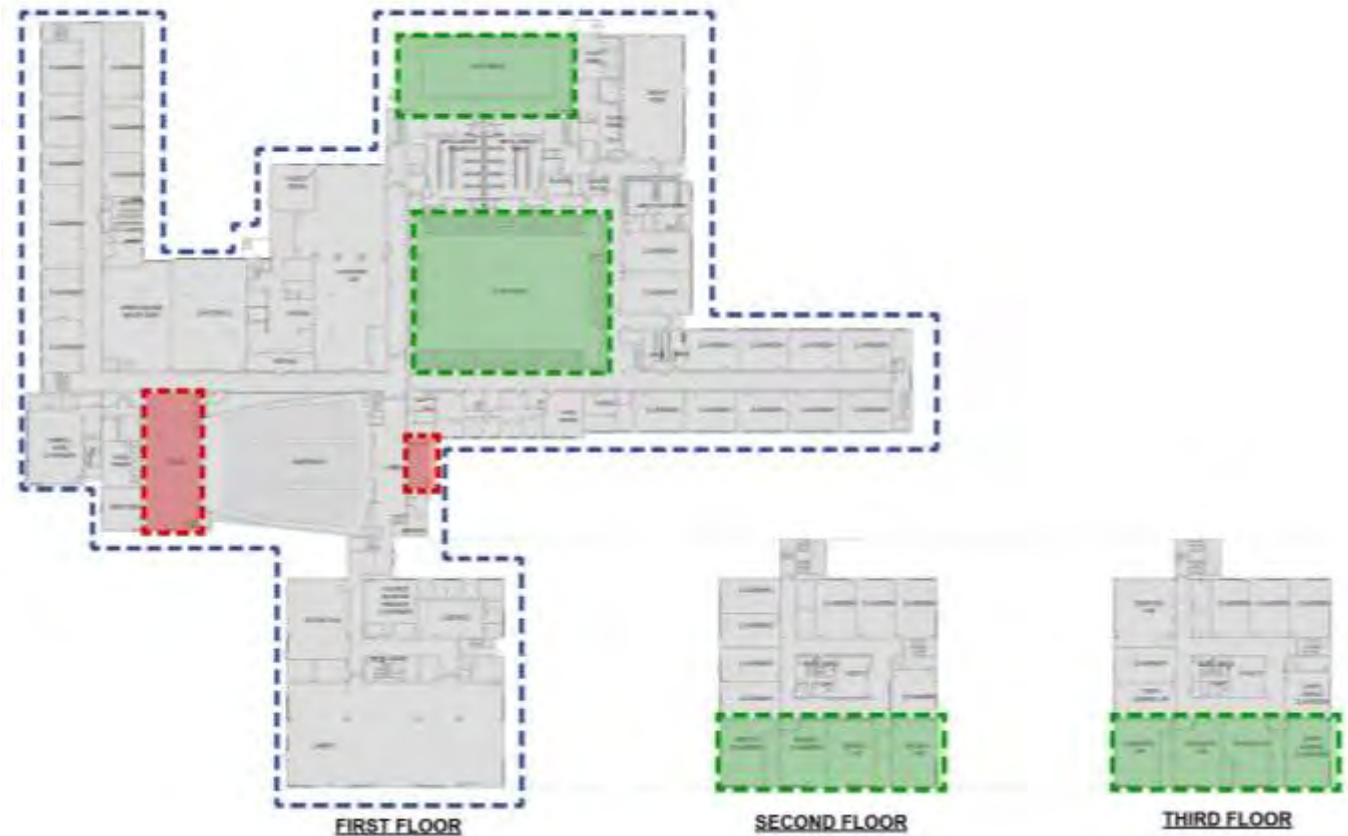
- Masonry Restoration
- New Exterior Doors
- Replacement of caulk around windows

BUILDING UTILITIES:

- Replace pool gutter/supply piping and heat exchanger
- Cabling, CER, clock systems & P.A.
- Replace mounted LED fixtures
- Air handling and ventilation upgrades
- New drinking fountains
- Replace faucets in bathrooms

EDUCATIONAL SPACE & PROGRAM IMPROVEMENTS:

- Pool – replace filters
- Gymnasium – repair floor
- Science – renovate classrooms on 2nd and 3rd floor



EDUCATIONAL SPACE & PROGRAM IMPROVEMENTS – WEST SENIOR HIGH SCHOOL



Renovate Science
Classrooms



Renovate Entry To
Create Secure
Entrance



Upgrade Interior
Door Hardware



New Roof/
Restoration

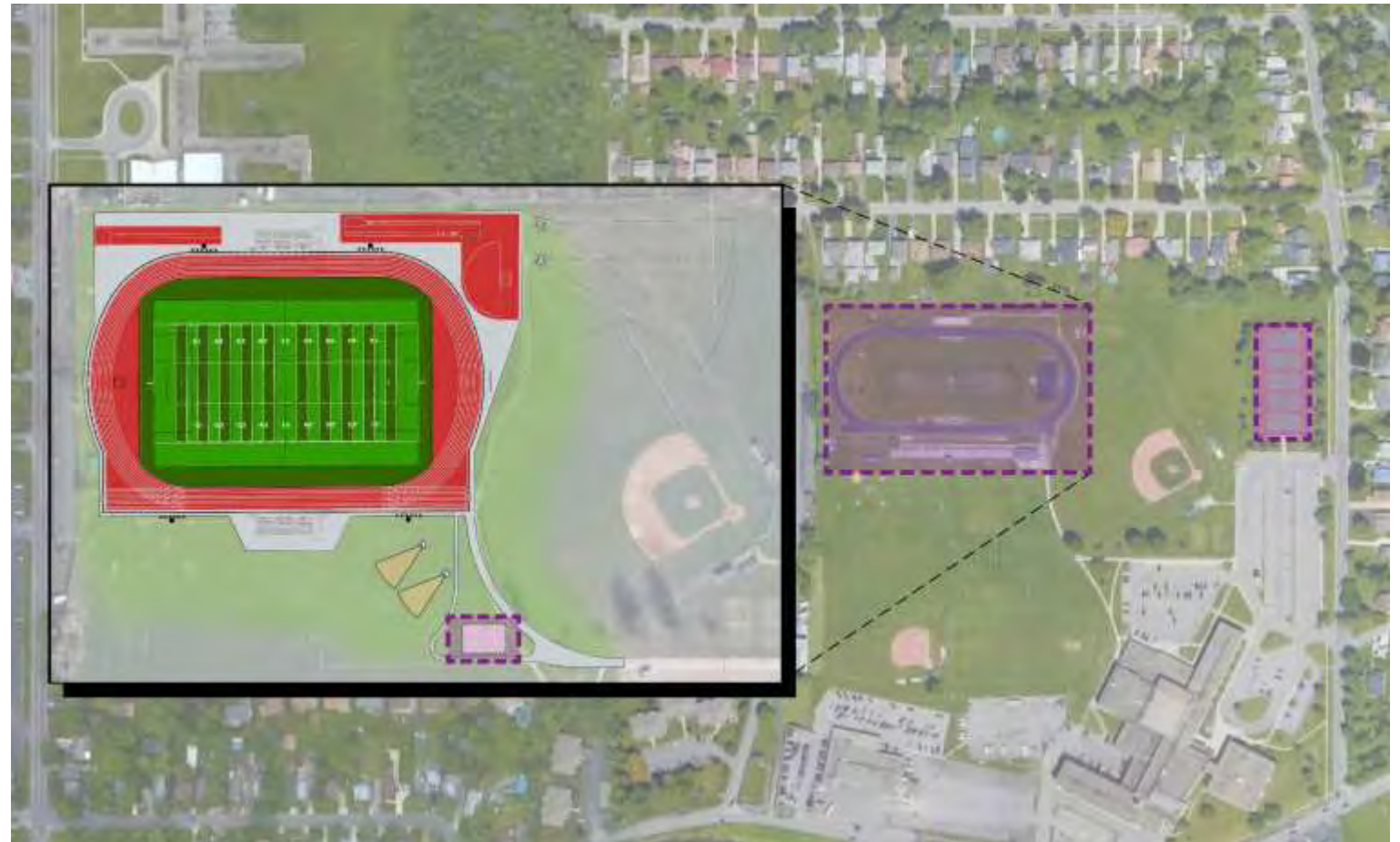


EDUCATIONAL SPACE & PROGRAM IMPROVEMENTS – WEST SENIOR HIGH SCHOOL SITE



EDUCATIONAL SPACE & PROGRAM IMPROVEMENTS - SITE (ATHLETICS):

- Track and Field –
 - turf field w/drainage
 - track & fencing
 - long jump
 - triple jump
 - pole vault
 - steeplechase
 - discus,
 - shotput
 - scoreboards
 - storm water management
 - home bleachers
- Pedestrian circulation around new track/field
- Lighting around track/field
- New concessions building
- Replace existing tennis courts and fencing



SITE IMPROVEMENTS:

- Replace asphalt parking
- Replace existing sidewalks and curbs

EDUCATIONAL SPACE & PROGRAM IMPROVEMENTS – EAST MIDDLE SCHOOL



HEALTH/ SAFETY/ WELFARE, SECURITY & ACCESSIBILITY:

- Remove window infills and replace with glass
- Update hardware on interior doors
- Repairs and upgrades to existing terrazzo stairs
- Enlarge health office

FACILITIES INFRASTRUCTURE:

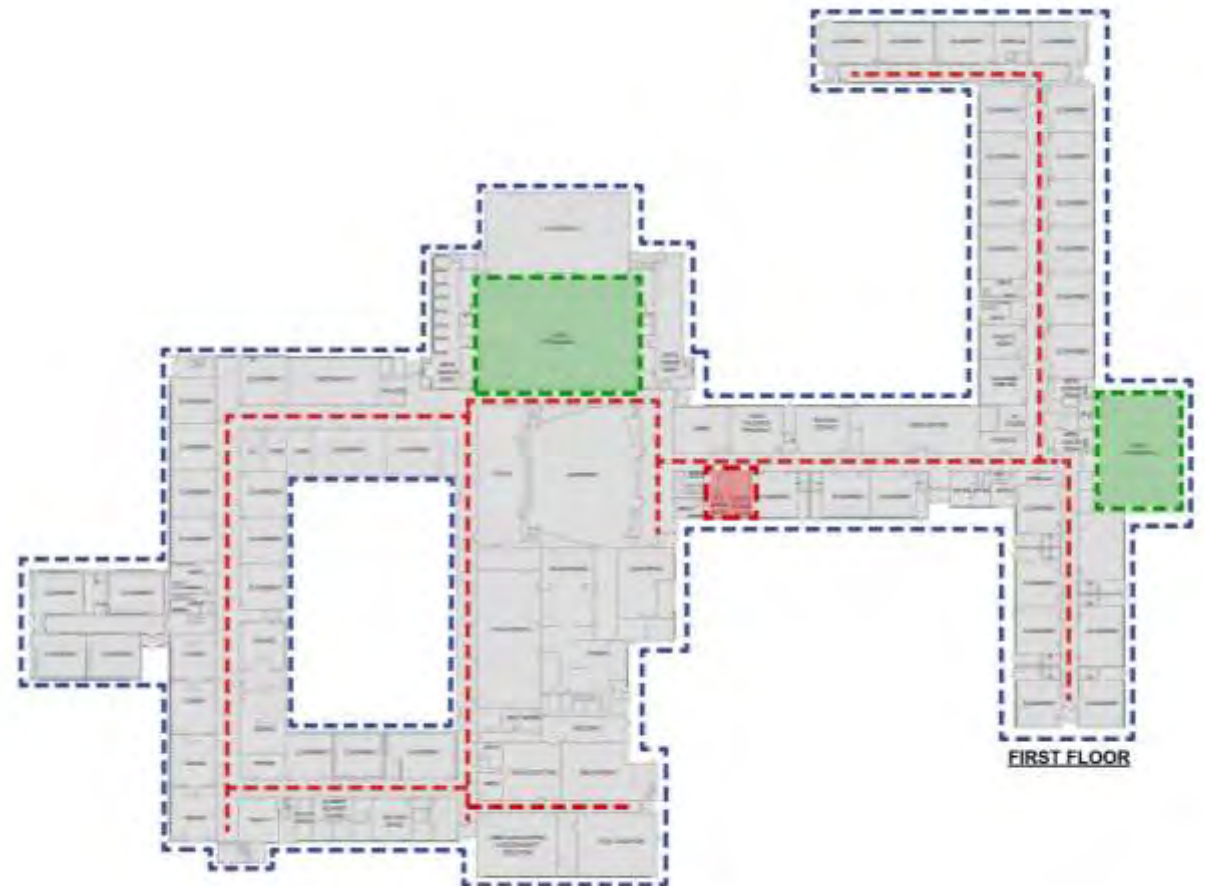
- New roof/restoration
- Masonry restoration
- New exterior doors

BUILDING UTILITIES:

- Replace building mounted lighting with LED light fixtures
- Cabling, CER & P.A.
- Air handling and ventilation updates
- New drinking fountains

EDUCATIONAL SPACE & PROGRAM IMPROVEMENTS:

- Replace gymnasium wall pads
- Replace folding partition with roll-down curtain
- Replace/restore damaged floor
- Repair ceilings
- New power bleachers in main gym



EDUCATIONAL SPACE & PROGRAM IMPROVEMENTS – EAST MIDDLE SCHOOL



Replace Wall Pads/
Remove Folding
Partition/ Replace
Damaged Floor/
Repair Ceiling



Masonry Restoration

Enlarge Nurse's
Office



New Roof/
Restoration

EDUCATIONAL SPACE & PROGRAM IMPROVEMENTS – EAST MIDDLE SCHOOL SITE



SITE IMPROVEMENTS:

- Replace damaged sidewalks & curbs
- Replace asphalt connecting drive
- Add visitor parking spaces to existing bus loop



EDUCATIONAL SPACE & PROGRAM IMPROVEMENTS – WEST MIDDLE SCHOOL



HEALTH/ SAFETY/WELFARE, SECURITY & ACCESSIBILITY:

- Renovate entry to create secure entrance
- Update hardware on interior doors

FACILITIES INFRASTRUCTURE:

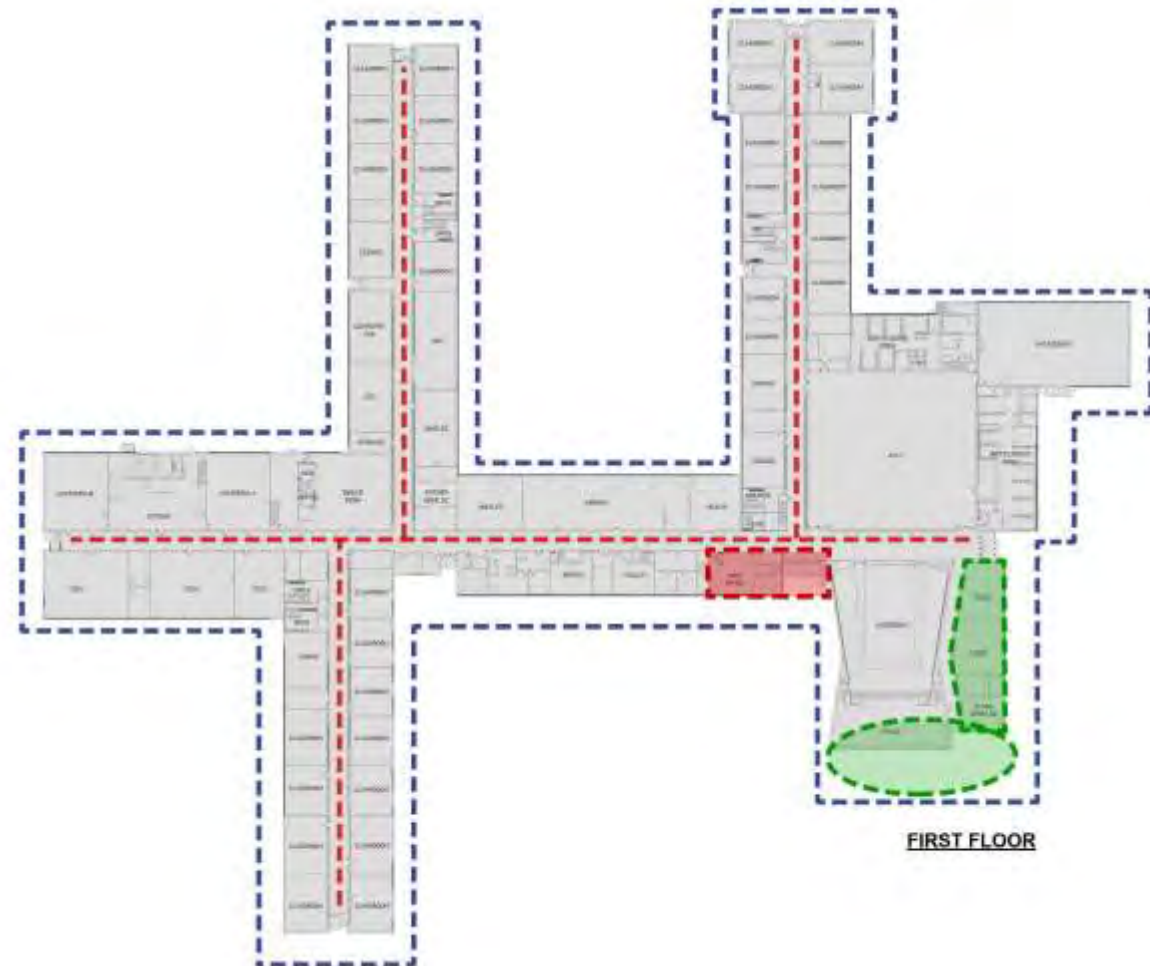
- New roof/restoration
- Masonry restoration
- New exterior doors
- New gym window hardware

BUILDING UTILITIES:

- Replace building mounted lighting with LED light fixtures
- Removal and replacement of panel boards
- Cabling, CER & P.A.
- Air handling and ventilation updates
- New drinking fountains

EDUCATIONAL SPACE & PROGRAM IMPROVEMENTS:

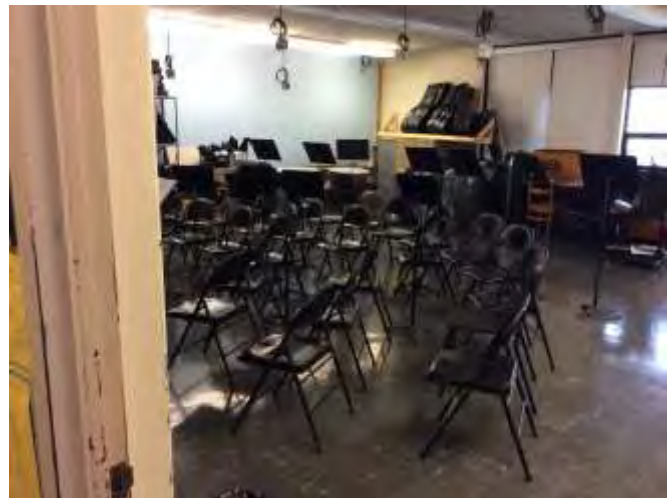
- Renovate music classrooms
- Addition for classroom and band room



EDUCATIONAL SPACE & PROGRAM IMPROVEMENTS – WEST MIDDLE SCHOOL



Renovate Music
Classrooms/ Addition
For Classroom And
Band Room



New Exterior Doors



Renovate Entry To
Create Secure
Entrance



New Roof/
Restoration



EDUCATIONAL SPACE & PROGRAM IMPROVEMENTS – WEST MIDDLE SCHOOL SITE



SITE IMPROVEMENTS:

- Replace damaged sidewalks & curbs
- Replace asphalt paving
- New parent drop-off
- New bus loop with visitor parking spaces

EDUCATIONAL SPACE & PROGRAM IMPROVEMENTS:

- Addition for music department



EDUCATIONAL SPACE & PROGRAM IMPROVEMENTS – ALLENDALE ELEMENTARY



FACILITIES INFRASTRUCTURE:

- New roof/restoration
- Masonry restoration and repointing
- New exterior doors

HEALTH/ SAFETY/ WELFARE, SECURITY & ACCESSIBILITY:

- Renovate locker rooms & toilet rooms to meet ADA
- Renovate existing entry/ main office to create secure entrance

BUILDING UTILITIES:

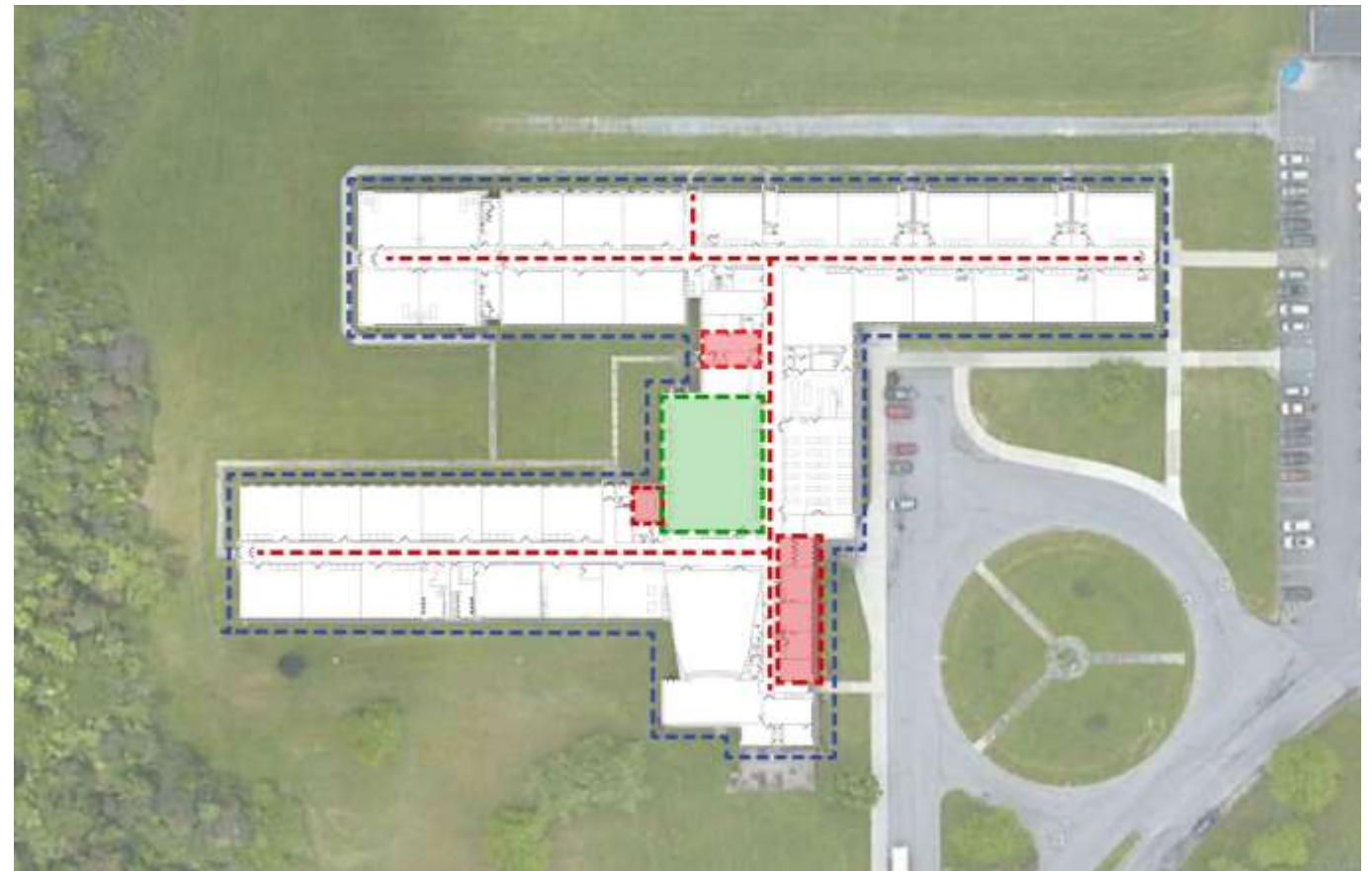
- Replace building mounted lighting with LED light fixtures
- Removal and replacement of panel boards
- Cabling, CER & P.A.
- Air handling and ventilation updates
- New drinking fountains

EDUCATIONAL SPACE & PROGRAM IMPROVEMENTS:

- Remove wood gym bleachers
- Replace folding partition with roll-down curtain
- Replace gym wall pads

SITE IMPROVEMENTS:

- Replace damaged sidewalks & curb



EDUCATIONAL SPACE & PROGRAM IMPROVEMENTS – ALLENDALE ELEMENTARY



Remove Wood Gym
Bleachers/ Remove
Folding Partition/
Replace Gym Pads



Upgrade Interior
Door Hardware



Masonry Restoration
/New Exterior Doors



New Roof/
Restoration



EDUCATIONAL SPACE & PROGRAM IMPROVEMENTS – CLINTON ELEMENTARY



HEALTH/ SAFETY/ WELFARE, SECURITY & ACCESSIBILITY:

- Upgrade interior door hardware
- Replace stair treads & landings

FACILITIES INFRASTRUCTURE:

- New roof/restoration
- Masonry restoration
- New exterior doors

BUILDING UTILITIES:

- Upgrade cabling, clock systems and P.A.
- New exterior LED light fixtures
- Upgrade air handling & ventilation
- New drinking fountains
- Kitchen drainage issues

EDUCATIONAL SPACE & PROGRAM IMPROVEMENTS:

- Replace folding partition with roll-down curtain

SITE IMPROVEMENTS:

- Replace damaged sidewalks & curb
- Replace pavement
- Address flooding at sidewalk



CLINTON ELEMENTARY



Remove Folding Partition



New Exterior Doors

Address Flooding At Sidewalk



New Roof/
Restoration

EDUCATIONAL SPACE & PROGRAM IMPROVEMENTS – NORTHWOOD ELEMENTARY



HEALTH/ SAFETY/ WELFARE, SECURITY & ACCESSIBILITY:

- Upgrade interior door hardware
- Provide accessibility to stage

FACILITIES INFRASTRUCTURE:

- Masonry restoration
- New exterior doors

BUILDING UTILITIES:

- Upgrade cabling, clock systems and P.A.
- New exterior LED light fixtures
- Upgrade air handling & ventilation
- New drinking fountains
- New backflow preventer

EDUCATIONAL SPACE & PROGRAM IMPROVEMENTS:

- Replace gym wall pads
- Replace folding partition with roll-down curtain

SITE IMPROVEMENTS:

- Replace damaged sidewalks & curb
- Replace bus parking lot



EDUCATIONAL SPACE & PROGRAM IMPROVEMENTS – NORTHWOOD ELEMENTARY



Provide ADA lift to stage



New Exterior Doors



Replace Gym Wall Pads/ Remove Folding Partition



Upgrade Interior Door Hardware



EDUCATIONAL SPACE & PROGRAM IMPROVEMENTS – WEST ELEMENTARY SCHOOL



HEALTH/ SAFETY/WELFARE, SECURITY & ACCESSIBILITY:

- New entry to identify main office/entrance
- Upgrade interior door hardware
- Replace terrazzo stair treads

FACILITIES INFRASTRUCTURE:

- New roof/restoration
- Masonry restoration and repointing
- New exterior doors

BUILDING UTILITIES:

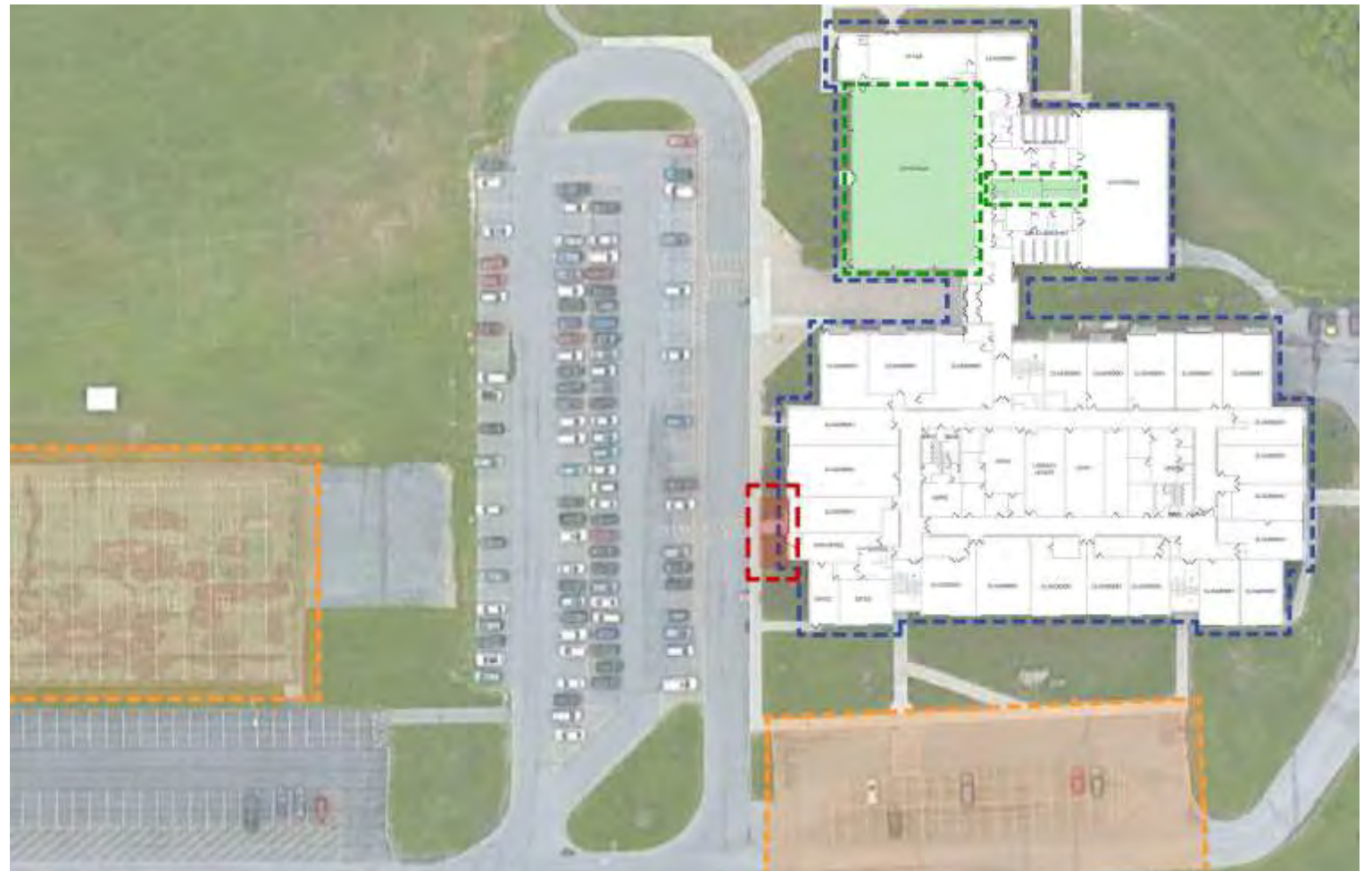
- Update cabling, clock systems and P.A.
- New exterior LED light fixtures
- New drinking fountains

EDUCATIONAL SPACE & PROGRAM IMPROVEMENTS:

- Replace gym wall pads
- Replace folding partition with roll-down curtain
- New corridor access to pool

SITE IMPROVEMENTS:

- Replace damaged sidewalks & curbs
- Replace play surface & fencing
- Replace parking lot



EDUCATIONAL SPACE & PROGRAM IMPROVEMENTS – WEST ELEMENTARY SCHOOL



Replace Gymnasium
Wall Pads



Masonry Restoration

Replace Play Surface
& Fencing



New Roof/
Restoration

EDUCATIONAL SPACE & PROGRAM IMPROVEMENTS – WINCHESTER ELEMENTARY SCHOOL



HEALTH/ SAFETY/WELFARE, SECURITY & ACCESSIBILITY:

- Upgrade interior door hardware
- Add permanent vestibule at back door parking lot

FACILITIES INFRASTRUCTURE:

- New roof/restoration
- Masonry restoration and repointing
- New exterior doors
- Replace gymnasium windows

BUILDING UTILITIES:

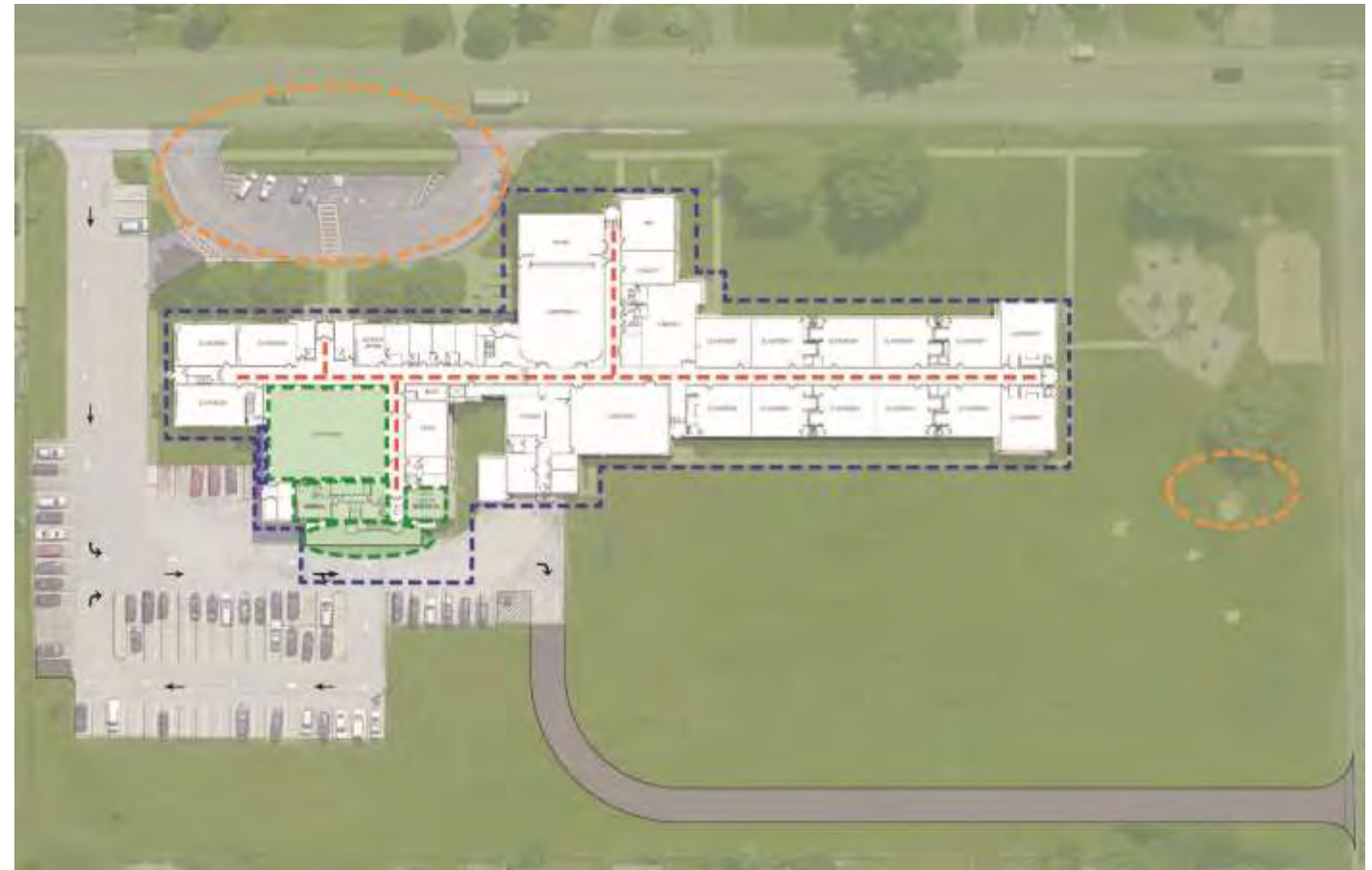
- Update cabling, clock systems and P.A.
- Upgrade air handling ventilation system
- New exterior LED light fixtures
- New drinking fountains

EDUCATIONAL SPACE & PROGRAM IMPROVEMENTS:

- Replace gym wall pads
- Replace folding partition with roll-down curtain
- Split boys locker room into girls/boys with 2 offices

SITE IMPROVEMENTS:

- Replace damaged sidewalks & curbs
- Replace asphalt paving
- Resurface existing bus loop
- Replace existing backstop
- New one way access road for parent drop-off



EDUCATIONAL SPACE & PROGRAM IMPROVEMENTS – WINCHESTER ELEMENTARY SCHOOL



Replace Gym Wall
Pads & Remove
Folding Partition



New Exterior Doors

Permanent Vestibule
At Back Door
Parking Lot



New Roof/
Restoration

EDUCATIONAL SPACE & PROGRAM IMPROVEMENTS – POTTERS ROAD



HEALTH/ SAFETY/WELFARE, SECURITY & ACCESSIBILITY:

- New entry to identify district offices/
entrance



LONG TERM PLAN - SCOPE



- Auditorium Renovations
- Window Replacements
- Locker Room Renovations
- Remaining Athletic Fields
 - Baseball, Softball & Lacrosse
- Remaining Sitework
 - Asphalt Paving & Sidewalks



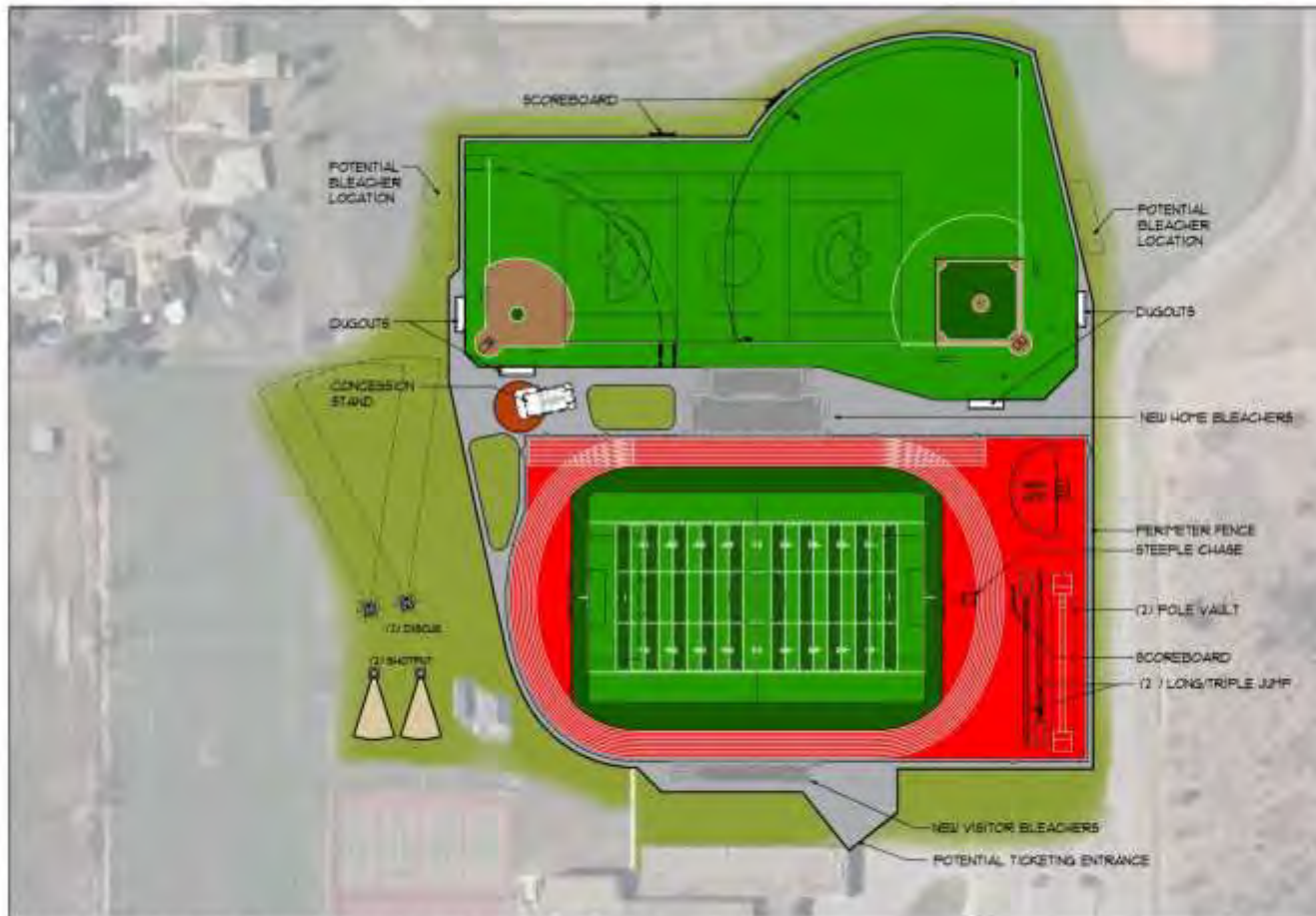
MUSIC / AUDITORIUM



- Renovate / improve **MUSIC** spaces
- Renovate **AUDITORIUM** and provide ADA Accessibility



ATHLETICS (SITE)



TRACK:

- 400M - 8x8 LANE TRACK
- ARTIFICIAL TURF FIELD
- SOCCER: 125' x 360' WITH 9'-10" OVERPLAY AT CORNERS
- FOOTBALL: 90' x 360'
- MEN'S LACROSSE: 180'x330' WITH 5' OVERPLAY
- (2) LONG JUMP/TRIPLE JUMP
- (2) POLE VAULT
- (2) EACH DISCUS AND SHOTPUT
- (1) HIGH JUMP
- (1) STEEPLE CHASE
- (4) LIGHTS

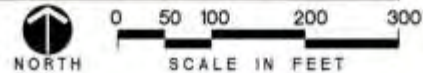
STADIUM:

- ARTIFICIAL TURF FIELD
- MEN'S LACROSSE: 180'x330' WITH MINIMUM 20' OVERPLAY
- WOMEN'S LACROSSE: 180'x330' WITH MINIMUM 20' OVERPLAY
- BASEBALL: 950' OUTFIELD
- SOFTBALL: 280' OUTFIELD
- 10 LIGHTS
- 4' HEIGHT PERIMETER FENCE WITH 6' WIDE EXTERIOR WALK
- (2) SCOREBOARD



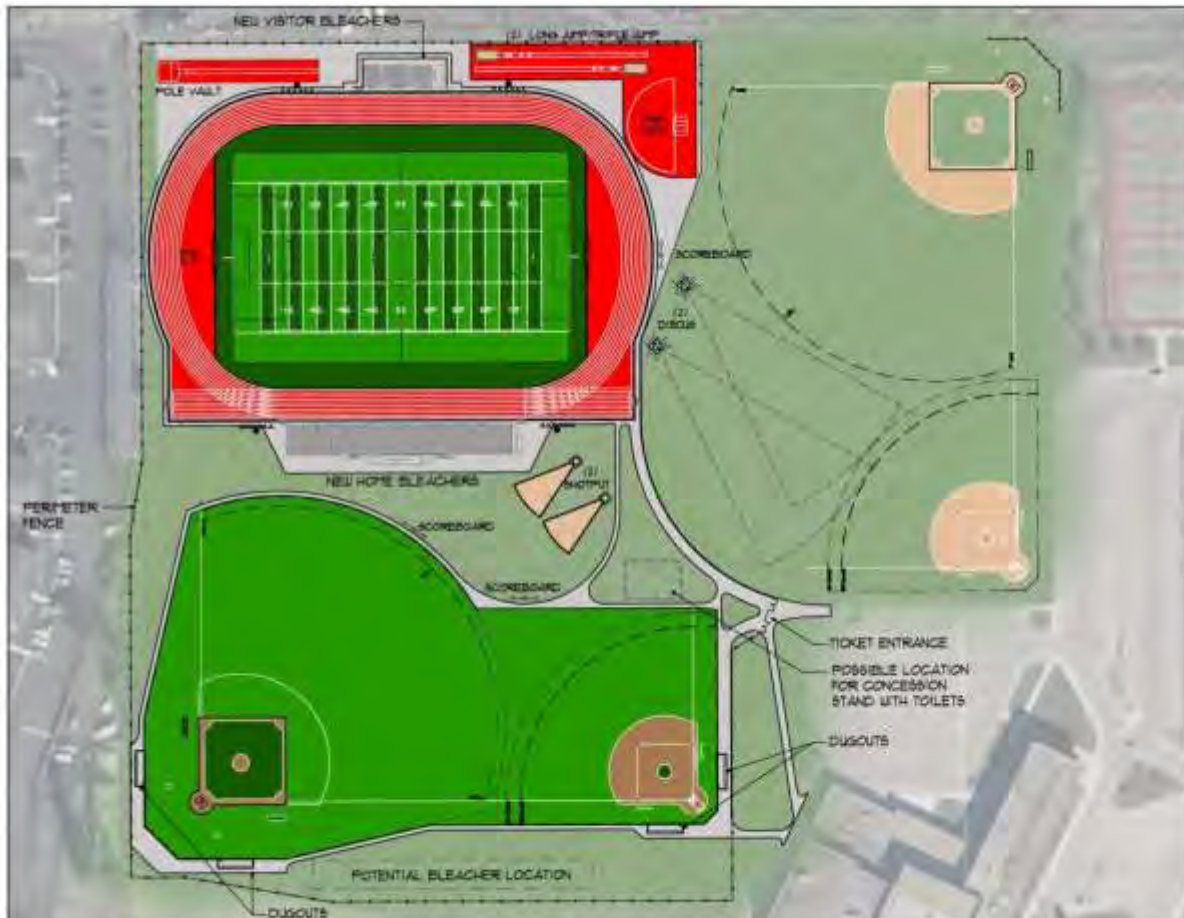
WEST SENECA CSD - EAST HIGH SCHOOL SK4A

MARCH 20, 2018



11-05-2015 09:54

ATHLETICS (SITE)



TRACK:

- 400M - 8x6 LANE TRACK
- ARTIFICIAL TURF INFIELD
- SOCCER: 225' x 360' WITH 5'-10" OVERPLAY AT CORNERS
- FOOTBALL: 160' x 360'
- (2) LONG JUMP/TRIPLE JUMP
- (1) POLE VAULT
- (2) EACH DISCUS AND SHOTPUT
- (1) HIGHJUMP
- (1) STEEPLE CHASE
- (4) LIGHTS
- 4' HEIGHT PERMETER FENCE WITH 5' WIDE EXTERIOR WALK
- SCOREBOARD

STADIUM:

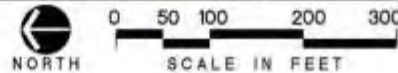
- ARTIFICIAL TURF FIELD
- UNIFIED LACROSSE: 160'x360' WITH MINIMUM 25' OVERPLAY
- BASEBALL: 360' OUTFIELD
- SOFTBALL: 280' OUTFIELD
- 10 LIGHTS
- 4' HEIGHT PERMETER FENCE WITH 5' WIDE EXTERIOR WALK
- (2) SCOREBOARDS

JV FIELDS:

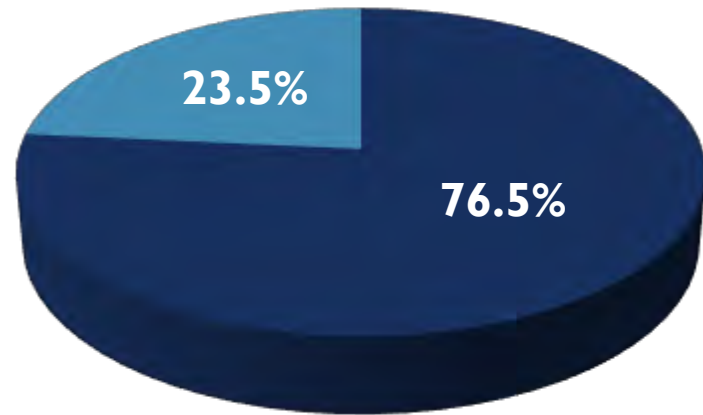
- RELOCATE BASEBALL FIELD, NEW DUGOUTS AND BACKSTOP.
- RELOCATED SOFTBALL FIELD, NEW DUGOUTS AND BACKSTOP.
- PROVIDE 30' HT NETTING ADJACENT TO PARKING LOT

WEST SENECA CSD - WEST HIGH SCHOOL SK3A

MARCH 20, 2018



PROJECT FUNDING



GOAL:

*“Maximize Aid &
Minimize Tax Payer Impact”*

**NO LOCAL
TAX INCREASE!**

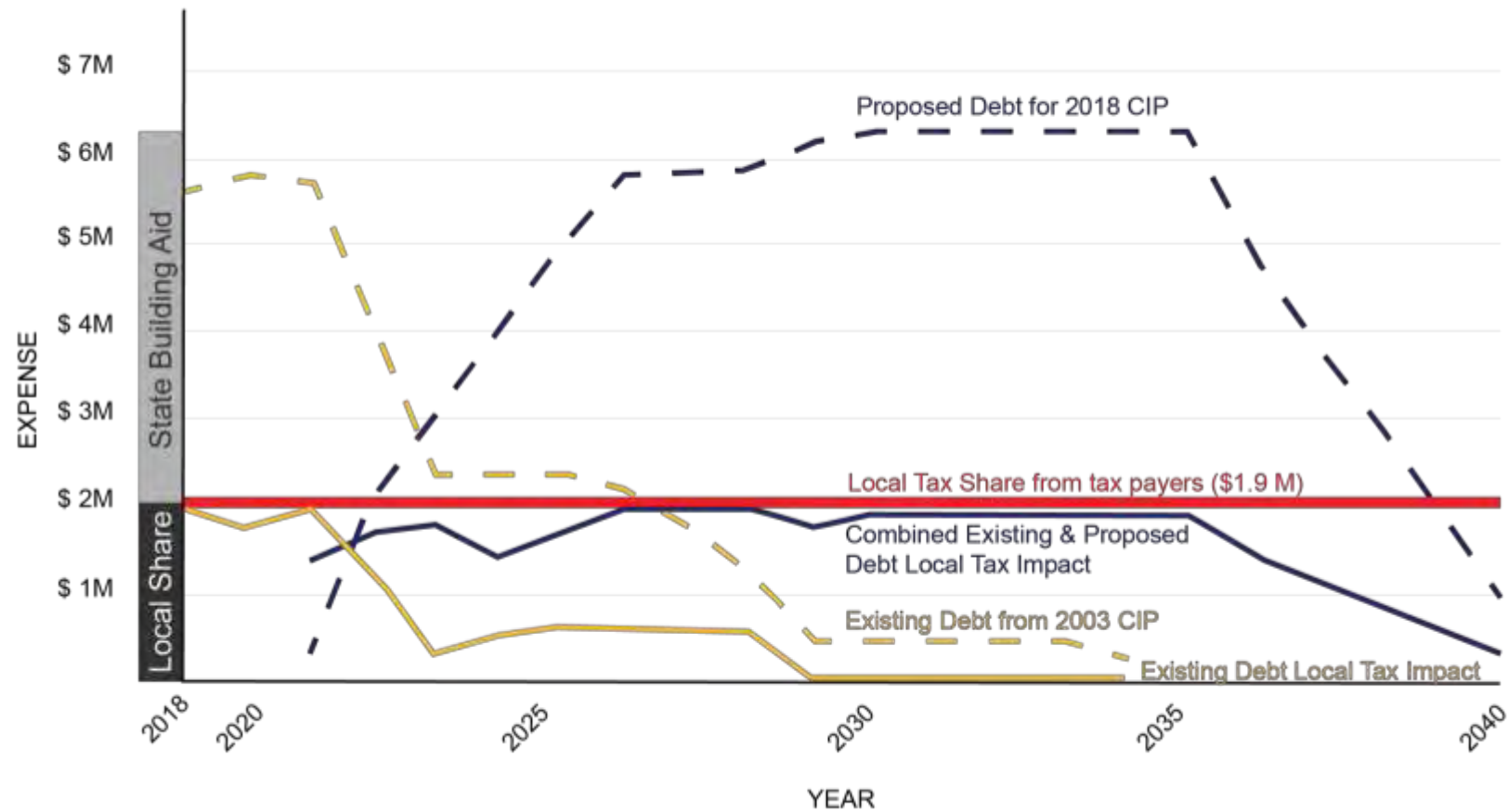
■ State Building Aid	\$0.765
■ Local Share	\$0.235

- West Seneca CSD is eligible for state building aid of 76.5% from the State Education Department for Capital Improvement Projects.
 - *This aid is separate from the District’s operating budget.
- Funding of the Local Share:
 - Utilizes current appropriations & property tax
 - Local Share is covered within existing tax cap

PROJECT FUNDING



STUDY OF LOCAL TAX IMPACT



PROJECT FUNDING



Project Cost:

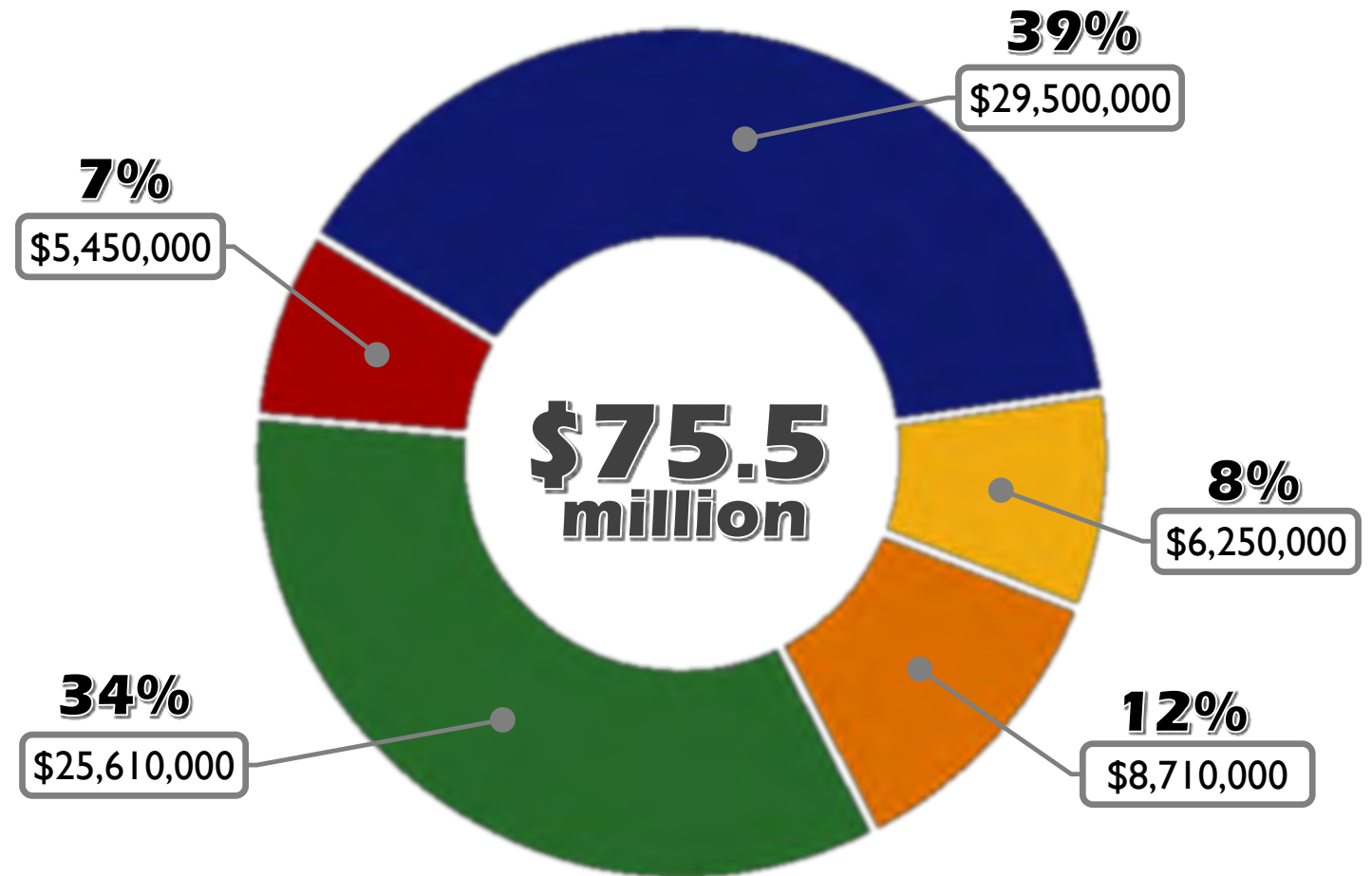
■ State Building Aid:	<u>\$57,380,000</u>
■ Local Share of Project:	\$18,120,000
■ (Local share covered within existing tax cap)	(\$18,120,000)

Amount to be covered in additional taxes: \$0

PROJECT BUDGET BREAKDOWN



- Health/ Safety/ Welfare
- Facilities Infrastructure
- Building Utilities
- Site Improvements
- Educational Space & Program Improvements





THANK YOU!
QUESTIONS?

Public Vote:

Tuesday, December 4th, 2018 from 7:00am – 9:00pm

- East Senior High School, 4760 Seneca St., West Seneca